

AFRICAN SCHOLARS' FUND

An Educational Trust registered with the Master of the High Court: NPO 002-838

PO Box 294 Rondebosch 7701 Email: office@asf.org.za
T (021)448 1255 / 94 F (021)448 1328 Web: www.asf.org.za



ANNUAL REPORT 2009

MISSION STATEMENT

The African Scholars' Fund, through awards and guidance, assists promising young schoolchildren from desperately poor homes to complete their secondary or FET college education.



Our area of operation includes the Western, Northern, Eastern Cape and parts of the North West.

BANKING DETAILS IN SOUTH AFRICA

Bank:	Standard Bank of SA Ltd
Account type:	Current account
Account number:	07 140 410 4
Branch code:	02 50 09
Swift code:	SBZA ZAJJ (Rondebosch)

TRIBUTE TO MARGARET ELSWORTH – FOUNDER

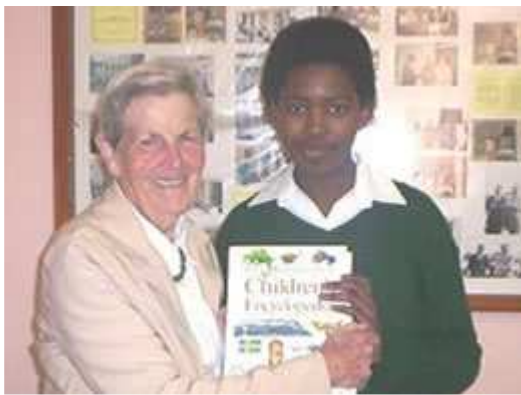
How does the African Scholars' Fund pay adequate tribute to the founder, Margaret Elsworth? How does anyone fittingly do that in recognising her and her work? Margaret is a retired medical doctor who founded the ASF in 1970. Filled with concern for the many children confronted with immense barriers to any education, she set about raising funds to offer some of them financial assistance. Since then over 40 000 scholars have been helped in significant measure through the secondary and FET stages of education. They have been given hope, with the opportunity to gain skills and move into responsible citizenship.



ASF support is more than financial; it includes personal mentoring, advice and guidance. ASF keeps in touch with the schools that bursars attend and follows where possible bursars' subsequent careers. Nothing has given greater joy than the gratitude of those thousands of young and once-young people that keep writing, visiting and giving thanks to the ASF. Helped by a corps of voluntary workers, trustees, dedicated staff and generous donors, Margaret in her nearly forty years at the ASF helm translated her vision and concerns into action.

What sort of person are we saluting? A metaphor that gets as close as any would be 'ball of fire'. Margaret's inexhaustible, relentless, irresistible long-term energy has been ASF's power base. She has given, given, given, both idealistically and practically. She has inspired and set others on fire, though some may have found the heat and pace hard to match. She has been a constant star of stamina and determination. She has shown adaptability in providing direction in the various kinds of weather ASF has had to face.

She is generous with her time, travelling and resources. She is highly articulate, and in the field of education, where she has carved her own special niche, she has been 'ever-mindful of the needs of others'. She has a disarming laugh-chuckle that often cloaks some of her more venturesome ideas. Balls of fire can have hearts of gold, but hers has not stopped her steely resolve not to accept a mere second-best for her scholars.



Many schools as well as educational and civic authorities have found that when this good citizen gets involved, things had better be done properly.

Few organisations owe as much to their founders as ASF does to Margaret Elsworth. As she leaves the day-by-day activities of ASF and becomes our 'inspiration emeritus', one is tempted to seek her monument by looking around at the fund's work, past and ongoing. But 'monument' is too cold and lifeless a word. The work lives, breathes and grows.

We have compared Margaret to a ball of fire. Suns don't go out. Their warmth remains. And so, on behalf of many thousands, we say to Margaret Elsworth in almost the words of a simple but profound old song: 'You are our sunshine.' Thank you for that.

CHAIRPERSON'S REPORT

The year 2009 was one of consolidation and moving ahead for the African Scholars' Fund. Eliza James, appointed Director in 2008 to succeed our founder, Margaret Elsworth, put her stamp on the work of the Board with energy and purpose.

The mission of the African Scholars Fund is very simple: to support the schooling of impoverished yet deserving young boys and girls, enabling them to obtain a good education and become productive members of society. This goal is achieved through the generosity of a large number of regular donors.

Over the years, the ASF has supported nearly 40 000 high school pupils and 1633 students at FET colleges. In 2009 the ASF distributed a record R1 558 100 to 2600 deserving high school pupils, who responded to the trust shown in them by achieving a 97% pass rate in their school examinations. In addition, 162 FET students were supported with bursaries totalling R643 359, and achieved an 82% pass rate.

Letters of advice and encouragement are sent to our scholars when they achieve good results, while those who are less successful are gently chided and urged to try harder. With donors receiving reports on the progress of their protégées, the African Scholars Fund maintains a personal and caring human touch.

On behalf of the Board of Trustees of the African Scholars Fund, I congratulate the Director and her small but highly efficient staff on another successful year.

John Webb
Acting Chairman

BOARD OF TRUSTEES: Margaret Bull (Chair), Ruth Allsopp, Cathy Birch, Hugh Corder, Margaret Elsworth, Stephen Flesch, John Gardener, Biddy Greene, Ramesh Maharaj, Wendy Moulton, Eunice Musapitso, Mark Solomon, Erika Targett, John Webb.

DIRECTOR'S REPORT

Yet another extremely busy, challenging and fulfilling year has drawn to a close and it is time to reflect on what has been. We granted 2600 awards to learners at high school level and 162 students were helped at FET colleges. In 2008, we piloted the Student Support Workshops at FET Colleges and we are pleased to report that this year we piloted the grade 9 Guidance Workshops at schools in the Western, Eastern and Northern Cape. These workshops focus on having the learner reflect on the career field s/he would want to enter before they go about choosing their subjects in grade 10. Incorrect subject choices had been identified as one of the key reasons for the high failure rate amongst grade 10 learners. Approximately 1050 learners attended and benefited from the experience.

During the 2nd half of the year, we had to face up to the fact that the Porter House Building had been sold and that our lease would not be renewed for 2010. We investigated the possibility of sharing premises with other NGO's, looked into securing office space that would allow us to stay in the Rondebosch area and eventually had to settle on premises in the Waverley Business Park (Mowbray area). Thanks to the generosity of the DG Murray and The LC Fund, we were able to purchase good quality refurbished office furniture and install a small PABX system.

2009, once again, highlighted the many challenges our bursars face and the inability of those in the Education sector to effectively address these issues:

- Learner on learner violence (a number of incidents resulting in the loss of life were reported throughout the year and is on the increase)
- Gangsterism (the inability to stop gangsters from entering school grounds and classrooms is not conducive to a learning environment)
- Lack of discipline and commitment (educators have no real recourse in dealing with learners who are ill disciplined or not focussed on their education)
- Poverty (inability to pay school fees, learners coming to school hungry, inadequate living – let alone study conditions)
- Lack of resources at schools and within communities (this impacts on the delivery of lessons and the ability of learners to present well researched assignments)
- Overcrowded classrooms and educators that are not fully qualified

[From Teachers.org on the "State of Teacher professionalism in SA"] : "South African children receive one of the worst standards of education in the world, a

fact confirmed by a variety of studies. There are many reasons for this, but it is certain that nothing can be done to improve the situation without first having all teachers in their classrooms for all the hours that their contracts require them to be there." [Statement made by DA spokesman, J Lorimer].

The media has perpetuated the negative public image of teaching by engaging in teacher 'bashing' and by generalising whenever a few teachers behave in an unacceptable manner. This negative public image is manifested in the failure of the profession to attract enough students and the fact that those who are already in the profession want to leave. In a study conducted in South Africa by the Human Sciences Research Council (HSRC) for the Education Labour Relation Council (ELRC), it was found that 55 percent of teachers would leave teaching if they could. The reasons cited for this include workload stress, low salaries, lack of discipline in schools and lack of career advancement. One cannot help but have a measure of concern for the learners who are taught by a workforce that is so demotivated.

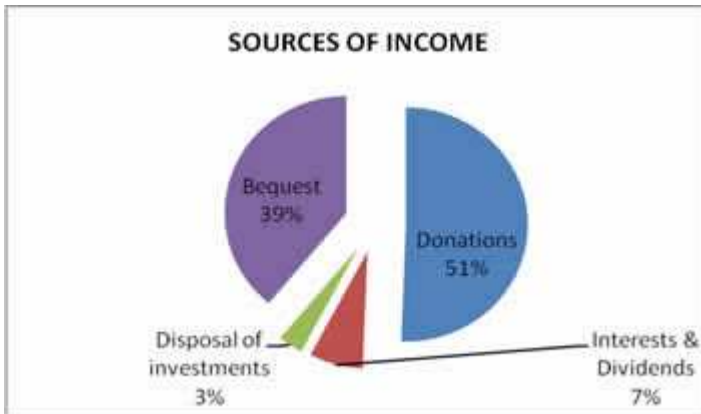
We visited a number of schools in the Northern, Eastern and Western Cape where, in a few isolated cases, it was clearly evident that a sense of hopelessness prevailed. However, in most cases we found both educators and learners eager to make the best of the limited resources that was available to the school. These visits left us with absolutely no doubt of the important role the ASF plays in the lives of our bursars. In many cases the financial and moral support serves as an absolute lifeline. It not only takes some of the financial burden off the shoulders of the parents / guardians, but gives the learner a sense of belonging, a sense of "someone is taking an interest in my education, someone out there believes in me". To our loyal donors; "Thank you for continuing to give to this work. We are confident that the goodwill will continue and that we will be able to meet the needs of the thousands of learners requesting our help and support".

2010 Applications:

Again, literally thousands of new applications were received of which 2086 were set aside for consideration pending their December 2009 results. 1340 met our criteria and in addition to the 1227 bursars carried over from the previous year, the ASF has a total number of 2567 bursars registered (at school level) for 2010. At FET college level we are aiming towards helping approximately 170 students.

Eliza James

FINANCIAL REPORT



This year we realised an 11.2% increase in overall income. It is to be noted, however, that this includes ongoing contributions in lieu of guarantees for a Director's salary for five years. Awards to learners were immediately increased from R600 to R700 up to a maximum of R1500. The good news is that we managed an overall increase of 26.5% in the total award amount allocated for 2009.



Annual Budgets – proportion of support (income to awards)

The aim of the organisation is to direct as big a portion as is possible of the funds received from our donors to the learners. Efficient administration and effective distribution of the funds understandably comes with its own set of expenses, which we try and keep as low as possible.

With the Annual Budget, we reflect on the previous year when projecting our Income and Expenses. The objective is to ensure that a big enough surplus is available to meet the needs of our many applicants without having to dig into our investments, which are carefully monitored to ensure the organisation's sustainability. Bear in mind that we never turn a learner down should s/he meet with our requirements, irrespective of the fact that we can never really be sure that we will meet our projected income. Once again, here we would like to pause and sincerely thank our loyal donors. We are only too aware of the fact that without their continued support, we would not be able to continue with this work.

*“To change the world is not your mission
To change yourself is not your duty
To awaken to your true nature is your opportunity”*

Below follows a table reflecting the proportion of support based on **projected** Income vs Expenses (as per annual budgets) - 2005 to 2009.

Year	2005	2006	2007	2008	2009
Income	R1'400 170	R1'646 000	R1'920 000	R2'500 000	R2'759 000
Expenses	R488 429	R632 784	R844 000	R1'145 000	R1'159 000
Surplus	R911 741	R1'013 216	R1'076 000	R1'355 000	R1'605 000
Awards College	R175 000	R200 000	R400 000	R600 000	R700 000
Awards Schools	R1'000 000	R1'000 000	R1'300 000	R1'400 000	R1'716 000
Surplus / Deficit	-R263 259	-R186 784	-R624 000	-R645 000	-R811 000
Total awards	R1'175 000	R1'200 000	R1'700 000	R2'000 000	R2'146 000
Proportion of support	84%	73%	89%	80%	88%

We are pleased that we have been able to continue directing the greater portion of donations received from individual donors to the learners. A trend that we hope we will be able to sustain long into the future. Thank you too, to our corporate donors on whom we can rely to help meet our operational costs in addition to sponsorship towards the learners.

Abridged Financial Statement for the year ended 31 December 2009

INCOME STATEMENT

For the year ended 31st December 2009

		2009	2008
	R	R	R
INCOME {incl. interest earned from bequest}		4 100 623	2 897 891
Bequest {income received in the form of shares / investment portfolio. Amount not included in surplus calculation}		2 613 927	3 135 263
Donations		3 398 047	2 516 150
Interest and Dividends		477 588	192 589
Surplus on disposal of investments		221 303	-
TECSAT (Administration Fee)	3 685	3 685	189 152
(Salary component)	NA 2009		
 EXPENSES		 1 156 265	 1 060 507
Office Expenses		207 099	251 471
Salaries (ASF Staff Salaries)	949 166	949 166	809 036
(Honoraria)	NA 2009		
(TECSAT Salaries)	NA 2009		
 SURPLUS AVAILABLE FOR AWARDS		 2 944 358	 1 837 384
AWARDS		(2 250 326)	(1 778 329)
SURPLUS FOR THE YEAR		694 032	59 055

BALANCE SHEET

		2009	2008
		R	R
ASSETS			
CAPITAL TRUST FUND		60 400	60 400
TRUST and OTHER FUND INVESTMENT		4 956 322	4 711 372
CURRENT ASSETS		4 677 242	1 081 571
TOTAL ASSETS		9 693 964	5 853 343

Copies of our audited financial statements are available at the office on request.

The Trustees thank Messrs Browne & Associates, and in particular Richard Browne, for the prompt audit of our books.

Assets are shown at Market Value as at 31 December 2009.

SCHOOL RESULTS - 2009

2600 Bursars received an award this year – totalling an amount of R1,559.501 that was distributed as follows:

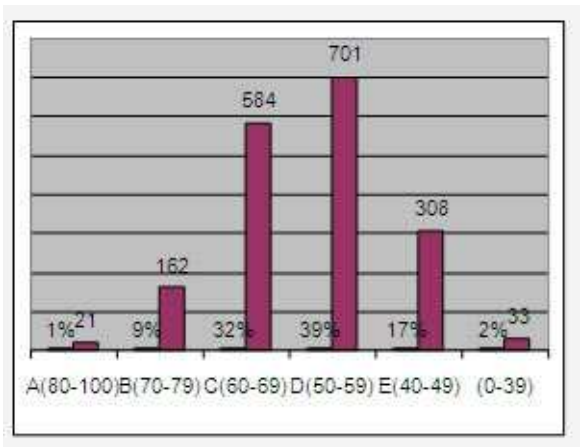
Province	# of Bursars	Award	%
Total number of bursars	2600	R1 558 100	
Eastern Cape	1837	R1 095 700	70%
Western Cape	585	R 350 751	23%
Northern Cape	178	R 113 050	7%

LEARNERS: GRADES 8 TO 11

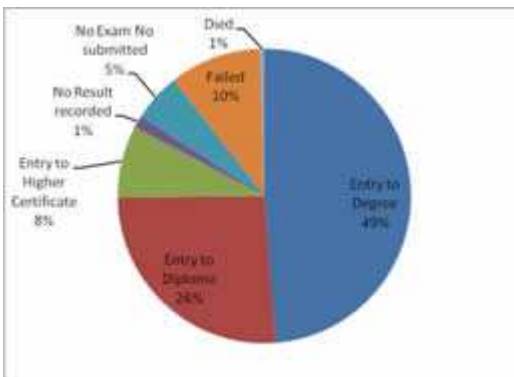
Summary - grades 8 to 11

A (80 – 100)	21
B (70 – 79)	162
C (60 – 69)	584
D (50 – 59)	701
E (40 – 49)	308
Below 40%	33
Outstanding Reports	315
Left School	22
Died	1
Total Bursars:	2147

Follow up rate:	84%
Pass rate:	98%



SENIOR CERTIFICATES



Summary – Matric results

Entry to Degree	223
Entry to Diploma	118
Higher Certificate	36
No result recorded	5
No exam number	23
Failed	46
Died	2
Total matriculants	453

(429/453 = 95% follow up rate)
 (375/421 = 89% pass rate)

The matriculants of 2009 that are immediately entering the world of work are now faced with the challenge of finding work in competition with about 3 million people aged between 18 and 25 who are unemployed. The question, though, is whether their schooling has adequately equipped them with the necessary interpersonal, academic or technical skills to cope in the workplace.

National Matric results - 2009:

Number of matriculants that wrote	: 551 940	Passed: 334 609 (60.6%)
Number that qualified for tertiary studies:	109 687	(19.8%)
Number registered to write maths	: 290 407	Passed: 133 505 (45.9%)
Number registered to write physics	: 220 882	Passed: 81 356 (36.8%)

Commentary on the matric results:

“Unacceptable, dismal, mediocre, pathetic, a crises” – this is how political parties, student organisations and trade unions described the 2 percentage point drop in the 2009 matric pass rate. The general consensus is that the consistent fall in matric pass rates (a decline of 10 percent since 2004) pointed to serious deficiencies in the education system which needed to be addressed urgently. While under-resourced schools, poor quality teaching and the medium of instruction are still major challenges, many children have the additional disadvantage of not having enough parental support during their school years – especially at matric level.

2009: Matriculant of the year (The Star) scores R50000 scholarship

Nomthandazo Ralawe, who hails from New Brighton in Port Elizabeth, points to the fact that where there is a will, there is a way. She joined the ASF family in 2006 when she entered grade 9 at Ithembelihle Comprehensive School. Nomthandazo and her older brother are cared for by their single mother. For her outstanding academic achievements she won a scholarship to embark on a B Comm Accounting Degree at the Nelson Mandela Metropolitan University in 2010. Ithembelihle Comprehensive also benefited by winning a laptop.



Congratulations Nomthandazo – we are extremely proud of you and wish you every success. ASF also commends Mr Felix (far right) for taking the initiative of entering this deserving young learner in the competition.

WORDS OF GRATITUDE FROM OUR BURSARS

We get hundreds of letters from learners expressing their gratitude, not only for the financial assistance, but also the continued encouragement received from a dedicated ASF team. Little do they realise that these are the very letters that encourage and motivate us to continue with this gratifying work.

Throughout my high school career, the team of African Scholars' Fund intensified that sense of pride and enthusiasm in me to constantly reach for new heights. The people of African Scholars' Fund gave me that courage, support and hope to take charge of my own life and future by guiding me in the right direction. You instilled that mentality in me that I am an achiever and a victor and that I am destined to make a success of my life if I believe in myself and display my talent. I will always be thankful to you for motivating and encouraging me to be the best I can be. It was indeed of sentimental value that I will always treasure.

I would also like to thank my sponsor who gave me the money to finance my studies. I always say that gratitude is the most exquisite form of courtesy and with this letter I would like to express my sincere gratitude and thankfulness to you for assisting me financially. It was of great

Dear Sir or Madam

APPRECIATION FOR THE SUPPORT

I thank you for the support you have given me, 2007 to 2009; you have led me to my dreams. Financially you contributed to my education - covering my school fees and stationery, giving me the things that a learner needed in order to survive at school.

You have built confidence within me with your comments and kept me inspired to do more. Although I got no competition in my class, I produced good marks because you were my inspiration and still will be. I am diligent, committed and proud today for myself and my achievements; you have played a big role to teach me those things.

I got no words to thank you, only my actions can – by achieving my goals. Keep doing the good work, people like you are what give learners faith about they are future. Thank you.

Kindly regards
Sipho Rilityane

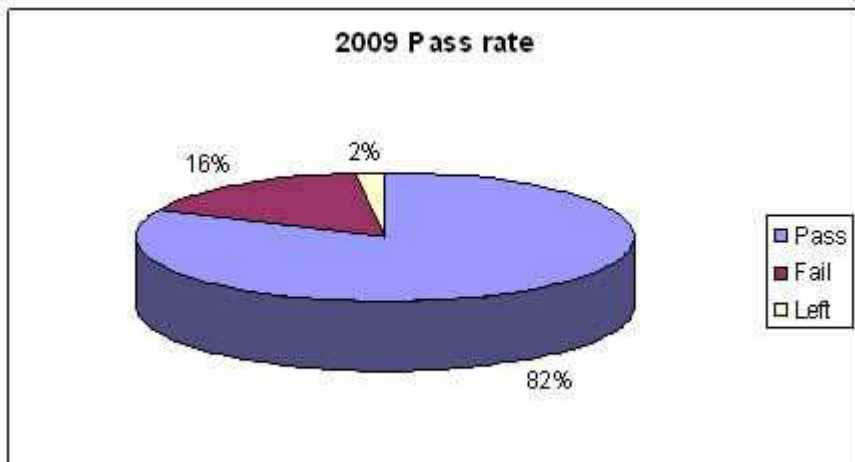
The past three years that I have been with you have been of great help. You did not only assist me financially, which was of great help itself, but you also gave me advice when I needed one. The financial assistance that you gave me enabled me to pay fees and to buy full school uniform. Having a full school uniform had a great impact on my good results.

I highly appreciate what you did for me and I hope you do the same for others. I must say that you have an impact in the good results obtained by the South African Students.

Yours sincerely
Miss Balewa Fiti.

FET COLLEGE REPORT

Bursaries were awarded to 162 students at FET colleges in the Northern and Eastern Cape totaling an amount of R 643 359. This year the pass rate dropped from 93% in 2008 to 82%. The drop in the pass rate can be attributed to the phasing out of the N (nated) courses where the entry requirement is a matric certificate, to NCV (National Certificate Vocational) courses, where the entry requirement is a grade 9 certificate. Colleges are also no longer offering bridging courses and students are struggling with the transition from school to college.



CURRICULUM CHANGES AND ITS IMPACT

National Certificate Vocational (NCV) is the curriculum offered at all public FET colleges around the country. It gives learners a Vocational alternative to an Academic Grade 10 – 12 by offering industry focused training on the NQF levels 2 – 4 in 13 different programmes such as Engineering and Related Design (Electrical, Civil or Mechanical), Management, Hospitality, Tourism, Finance etc.

The National Education Department had informed all colleges that the previously known N (nated) courses would be phased out (N1-N4). This system leaves those who have obtained a senior certificate, but did not qualify for tertiary studies, no option but to backtrack and spend 3 years in a course designed for learners with a grade 9 certificate. At the end of

their 3 years of study they will be awarded a Vocational certificate at matric level (NQF level 4). The ASF may not be able to effect a change to the system, but can offer support to those students that find themselves in the midst of a system that presents additional challenges to that of having to cope with a relatively foreign environment, intensified studies and the thought of entering the world of work on completion of their studies - hence, the ASF Student Support Workshops.

FET Student Support Workshop

Workshops were held in Port Elizabeth and East London for our bursary holders. Students are really appreciative of these workshops, saying there is nothing like them as they do not get any career guidance at college.

PE Workshop



East London Workshop



Lungelwa attended the workshops in 2009, finished her N6 Management Assistant Course and is now gainfully employed. Congratulations Lungelwa ☺

What the students say about the workshops!

- “Very helpful for us as teenagers and as students. We need people to remind us of what we can do and achieve in life”
- “Motivational and encouraging lecture. I truly learned a lot, thank you so much.”
- “Learned a lot of things, please visit our colleges and campuses for more inspiration”

WHERE ARE THEY NOW?



Elgee comes from Bethelsdorp. He completed his N6 Marketing Management at Russell Road Campus. He is currently working for Blackscheepe Communications as a Junior Accounts Executive. We are so proud of him.



Tandile got tired of her waitressing job and applied for a bursary to do Business Management at Buffalo City FET College. She completed her studies last year and now works as an Accounts Clerk at First National Battery. Well done Tandile.



Xolile is from KwaZakhele and completed his N6 Electrical Engineering at PE College for FET, Iqhayiya Campus. He is now an intern Technician at Vodacom. We wish Xolile every success.

A special word of thanks goes to:



☆ **DG Murray Trust**

☆ **Edgar Droste Trust**

☆ **The Table**

FAX NO:-(021) 689-9095

AFRICAN SCHOLARS FUND

47 WATTLE CRESCENT
AMALINDA
EAST LONDON
5247
20 NOVEMBER 2009
TEL: 083 685 6604

AFRICAN SCHOLARS FUND
PO BOX 294
RONDEBOSCH
7701

Dear Sir\ Madam

My name is Noluvo Mzini; I was one of the students you helped in furthering their education. No words in this world can help you understand how grateful I am to you. I would love to thank you for everything you have done for me; you have given me the greatest gift ever which is education, something that no one can ever take away from me. It gives me a great pleasure to inform you that I am now working at BUFFALO CITY MUNICIPALITY at the Human Resource Department at East London.

Its people like you who makes South Africa to be a better place. You have proven to me that really these light at the end of the tunnel. You people are a great inspiration to us because you have showed me that you can achieve anything that you set your mind on. I hope that you give to others what you have given me.

Il forever be grateful to you and again thank you very much.

Yours Faithfully

N. MZINI

AFRICAN SCHOLARS FUND (UK)

UK Address: 10 Lurkins Rise, Goudhurst, Cranbrook, Kent, TN17 1ED

SA Address: P O Box 294, Rondebosch, Cape Town, 7701, South Africa

Tel: 01580 211550 email: sandyelsworth@yahoo.com

Charity Number 1070406

Herewith the Chairman's Report for the past year 2009 and a Statement of Accounts for the Year commencing in January and ending 31 December 2009.

CHAIRMAN'S REPORT FOR 2009

It gives me great pleasure to report again on the activity of the UK branch of the ASF.

Contributions during the year totalled £11,428.58 with all the monies directed to the office in Cape Town for disbursement.

Congratulations continue to Robert Boyd from his efforts in fundraising, including the successful completion of the Paris Marathon on top of the London Marathon. A further £1,052.55 has come in through JustGiving. Many thanks. Where will you go next?

The Fund has received a substantial donation regularly from the Salters' Company and I'd like to thank the Charities Committee for their continued support despite it being a difficult year.

Many thanks, once again, for those who have given both financial and verbal support to the work of the Fund, and we look forward to your continued support.

Sandy Elsworth
Chairman, Board of Trustees
African Scholars Fund (UK)

STATEMENT OF ACCOUNTS TO 31 DECEMBER 2009

INCOME:	Donations Received	£11,378.45
	Interest	£50.13

	Sub total Income	£11,428.58
--	------------------	------------

EXPENSES:	Bank charges	£0
	Administration	£0
	Sub total Expenses	£0

AVAILABLE FOR DISBURSEMENT:	£11,428.58
-----------------------------	------------

The Charity has no assets or liabilities.



Robert Boyd

(Ran the Paris and London marathons to raise funds for ASF)

Banking details in the United Kingdom :

Natwest (Sort Code 55-70-13)

Name of A/C: African Scholars' Fund

A/C Number: 16388364

We are a registered charity in the United Kingdom .

DONOR HIGHLIGHTS

- Abbotts College and Anglo-American (Tshikululu Social Investment) continued their sponsorship of 9 learners. These learners continue to excel despite finding themselves in a more foreign and challenging environment.
- Just like Mrs. Gertie Berman, who celebrated her 100th birthday in remarkably good health and spirit, a great many of our donors continues to suggest that their family and friends make donations to the ASF in lieu of gifts. We wish to extend our most heartfelt gratitude to all of them that saw fit to extend their celebrations in this noteworthy fashion – God’s richest blessings to you all.
- A very special note of thanks to the Edgar Droste Trust, the DG Murray Trust and FNB Fund for sponsorship of the Student Support Workshops offered at FET College level.
- Pieter Bol and Petrina Reynolds annually rally financial support for the ASF in the Netherlands. We are most grateful for their continued commitment in collecting and channelling these funds to us.
- We welcomed Sandy Elsworth, UK Chairman, plus annual visits of Drs John & Juliet Boyd, Robert Berman & sons and Werner & Penny Hoff.

*“Whatever you do or wherever you go,
Let your mind remain
In your heart”.*

The Trustees wish to thank all our regular sponsors and donors for their continued support for the period 1.1.2009 to 31.12.2009

ABE BAILEY TRUST, The
ABRAHAMS, Alva Joyce,
Estate Late
ACKERMAN FAMILY
Educational Trust, The
ALLISON, Mr & Mrs D
ALLSOPP, Mr A C
ALLSOPP, Ms K
ALLSOPP, Ms R J
ANDREW, Mr & Mrs K
ANDREW, Mr R E
ANON
ANON
ANON (Edinburgh)
ANON (Milnerton)
ANON (Mowbray)
ANON (Tokai)
ATTWELL, Mrs G
BADENOCH, Ms A C
BAGLIONE, Mr G
BAGULEY, Mrs B J
BAIGRIE, Drs R J & C
BAKER, Liam
BAKER, Mrs J
BAKER, Liam
BANNATYNE, Miss E R
BARNETT, Mrs E A
BARNETT, Rev J and Mrs A
BARRY, Mrs H
BATES, Ms A E
BAX, Rev & Mrs D
BEAN, Mr & Mrs K
BEATTIE, Ms J
BENTON, Mrs M
BERDUN CHARITABLE
Trust, The
BERMAN, Sir Franklin
BERMAN, Joel
BERMAN, Marc
BERMAN, Mr & Mrs R
BERMAN, Sam
BETTENS, Ms S
BEVIS, Mrs A
BIRCH, David & Cathy
BLAGDEN, Mr H
BOB'S PANTRY (Mr & Mrs
R F Jordan)
BOL, Pieter
BOONZAAIER, Dr S
BOURNE, Prof S A
BOYD, Dr J
BRADLEY, Mr & Mrs C R
BRADLOW CHARITABLE
Trust, The Frank & Edna
BRATHWAITE, Ms C
BULL, Prof & Mrs J R
BURGER, Miss E
BURTON, Mr & Mrs G
CALDER, Mrs J
CARGAN, Mr L
CARTER FAMILY
Charitable Trust, The
CHALMERS, Mrs J
CHAMBERLIN CHARITABLE
Trust, The Elsie & Allan
CHAMPION CHARITABLE
Trust, The Hillary & Dorothy
CHIAPPINI CHARITABLE
Trust, The L & S
CLAGUE, Mr & Mrs E M
CLAPHAM TRUST, The G B
CLAYTON, Mr R D
CLEMINSHAW, Mrs D
CLIFFORD-HOLMES, Ms G
COETZEE, Ms Gaby
CONSTANT, Mrs M
CORDER, Prof H & Ms C
COTCHOBOS, Mr & Mrs A
COUSINS, Mr & Mrs D A
CRIDA, Mrs A H
CROUDACE CHARITABLE
Trust, The Lynette
CTP LIMITED, Caxton Group
CULL, Tim and Karen
CUSTOMER EQUITY
Company, The
DANGWEN TRUST, The
DAVEY, Mr B R
DAVID, Ms L
DAVID GRAAFF
Foundation, The
DAVIDGE, Mr & Mrs J
DAVIES, Mrs J
DAYIMANI, Ms A
DE BEERS FUND – DE
Beers Trust
DEGENAAR, Dr & Mrs J J
DE LISLE,, Rev M H
DENNISON, Mrs M
DERHAM, Mrs C E
D G MURRAY TRUST, The
DICEY, Mr & Mrs D
DICHMONT, Mr & Mrs I
DOSÉ, Miss R M
DUNCAN, Mr J E
DU PLESSIS, Mrs E P
DUSTERWALD, Mr & Mrs R
DU TOIT, Ms S
EAGLE, Mr & Mrs G J
ECKFORD, Mrs S
EDGAR DROSTE TRUST,
The
EINHORN, Mrs E C
ELSWORTH, Mr & Mrs A J
ERRINGTON, Ms C
ETIENNE ROUSSEAU
Gedenkfonds
ETON COLLEGE
EVERINGHAM TRUST,
The Geoff
EXCLUSIVE BOOKS,
Constantia
FARLAM, Mr & Mrs I G
FARQUHARSON, Mr D J A
FIRSTRAND FOUNDATION,
The FNB Fund
FISHER, Mrs H A
FISHER, Dr R M
FOLB, Prof & Mrs P
FOSKETT, Ms K
FOX, Mrs H
FOX, Miss B J
FRANCE, Mr R A
FRANCIS, Mr M J D
FUCHS FOUNDATION, The
Carl & Emily
GARDENER, Mr James
GERBER, Jill & Jack
GILBERT, Mr H
GILES, Mr D R
GODDARD, Mrs R
GOGO, Ms N J
GOLDBERG, Mr M
Professor & Mrs J R Greene
GRIMBEEK, Mrs C L
GROGAN, Mr & Mrs T
GROSS HENDLER & FRANK
Clerks Fund
HAMILTON, Mr P
HARKER, Mrs J L
HEALE, Mr J
HENSHALL, Ms J
HIRSCHBERG, Mr & Mrs A

HIRSCHSOHN, Prof & Mrs P
 HODGE, Mr & Mrs V P
 HOFF, Dr & Mrs W
 HOLGATE, Mrs J M
 HOLLEMAN, Mrs A
 HOOLE, Miss J R
 HOPKINS, Mr B D
 HORNE, M B A & J E
 HOUGH, Mr & Mrs J H
 HOWES, Mr G L
 HOWES, Mr L W
 HOWIE, Justice C T
 IDESIS, Mr & Mrs H & family
 IERLANT, Peer & Mirella
 INNER WHEEL CLUB
 of Claremont
 INVESTEC BANK LIMITED
 IRLAM, Mr & Mrs J
 IVEY FAMILY TRUST, The
 R & E
 IYABUYA CONSULTING CC
 JAMES, Ms E
 JAMES, Mr G B
 JARDINE, Dr & Mrs W I
 JEFFERY, Mrs P
 JOBSON, Mrs M J
 JOBSON, Mr N B
 JONES, Mrs H
 JONES, Mrs R
 JONGEJAN, Vera
 JURITZ, Mrs J M
 KANTOR, Mr & Mrs P
 KAPPELHOF, Ton
 KEEN, Dr & Mrs G A
 KEETON, Prof & Mrs G R
 KENT, Ms P
 KENYON, Miss J
 KILANI, Adv J L
 KINAHAN, Councillor O
 KING, Justice E L
 KIRSCH, Dr & Mrs R
 KLEIN, Mr & Mrs E
 KLINK, E C
 KNIGHTS, Mr & Mrs H
 KOKERNOT, Ms Diana
 KOTTLER, Prof & Mrs R E
 KURGAN CHARITABLE
 Trust, The Israel & Rose
 LEARY, Prof P M
 LAKERVELD, Ad & Wenda
 LEEUWENBURG, Mr M
 LEMANSKI, Drs S & C
 LIU, Mr Francis
 LLOYD, Dr & Mrs D M G
 LORIMER, Mrs P
 MADDEN, Dr & Mrs M V
 MALHERBE, Mrs V C
 MARCK, Klaas & Dieuwke
 MARTIN, Mr D
 MATLHAKU, Mr M
 MCCORMICK CHARITABLE
 Trust, The R P
 MCGREGOR, Mr J
 McCRINDLE, Mrs P A
 McNAMARA, Dr & Mrs J D
 MELVILLE, Mr & Mrs D R
 MENTOR, Dr K
 METCALFE, Mrs P
 MIDDELMANN, Mr M J
 MILLAR, Mr J R
 MILLER, Miss M S H
 MOODIE FOUNDATION, The
 Douglas & Valerie
 MOUNTFORD, Ms S W
 MOULT, V
 NATIONAL COUNCIL OF
 Women of South Africa
 NAYLOR, Mrs M
 NDHONDHO, Prince L D
 NELSON MANDELA BAY
 Municipality
 NISSLEY, Mrs E B
 NOAKES FAMILY
 Charitable Trust, The
 NORTON, Ms T
 NTSINDE, Ms N
 NTWENKA, Mr B S J
 NUPEN, Mrs R J
 NUSSBAUM FOUNDATION,
 The Rolf-Stephan
 OGILVIE-THOMPSON, Ms V
 ORPEN, Mr & Mrs C M W
 PARR, Dr G W
 PASCOE, Ms Rosemary
 PAYNE Rosemary
 PERRY, Mr & Mrs R K
 PIETERSE, Ms S A
 PIETERSEN, Mr G C
 PRICE, Mrs A K
 RAPHAELY FAMILY
 RAJAK, Betty & Herbert
 RAVENSCROFT, Mr M J
 REES, Mr Jonathon
 REITZ, Mrs E
 REYNOLDS, Petrina
 ROBERTS, Mr S S
 ROBERTS, Mrs W
 ROBERTSON, Dr J
 ROBERTSON, Ms Sue
 ROBINSON, Mr & Mrs A M L
 ROLLO, Mr M W
 ROSEBANK SPIRITUAL
 Development Group
 ROSSINGTON, Mrs S
 ROTARY CLUB OF
 KIRSTENBOSCH
 ROWE, Mr & Mrs P
 RUSTENBURG HIGH
 SCHOOL
 for Girls
 RYKLIEF, Ms S
 SALTER'S COMPANY, The
 SANDERS, Dr H-R
 SANDER, Mrs E M
 SAUNDERS, Dr & Mrs S J
 SCHAUERTE, Dr A
 SCHEERBARTH, Benjamin
 SCHWARTZ, Ms M
 SHACKLETON, Prof & Mrs M
 SHAPIRO-LIU, Mrs Rosemary
 SINCLAIR, Mrs N
 SMALBERGER, Justice J W
 SMALBERGER, Ms K L
 SMART, Dr R
 SMITH, Prof A B
 SMITH, Mr & Mrs D C R
 SMITH, Mrs G
 SMUTS, Mrs J E
 SOLIDARITÉ AFRIQUE
 DU SUD
 SOLOMBELA, Mr L
 SPENCER, Andrew
 STANFLIET, Mrs Z
 STARKE, Mrs L
 STEPHEN, Prof A M & Mrs H
 M
 ST GEORGE'S CATHEDRAL

ST MICHAELS CHURCH
(Sunningdale, Ascot)
ST OLA'S TRUST
ST PAUL'S WOMEN'S
Association, Rondebosch
ST PETER'S ANGLICAN
Church, Camps Bay
ST STEPHEN'S CHURCH,
Pinelands
ST THOMAS'S CHURCH,
Rondebosch
SUITSUPPLY B.V.
SWAFFHAM Parish Church
SWINNY, Mr R L
SWITCH-IT
TARGETT, Mrs E
TETLOW, Ms Sarah
TEUNISSEN, Ton & Irene
THE TABLE
THE SALTERS' Company
TIMKOE, Ms S
TONI SAPHRA GROUP of
the Union of Jewish Women
TRANS AFRICA SAFARIS
TUESDAY FRIENDS
UNION CHURCH OF
Proctor, USA
UNIVERSITY OF THIRD
Age, Cape Town
VAN DE VIJVER, Ms L
VAN DEN HEEVER, Justice L
VAN DER HORN, Mr F J
VAN DER SPUIJ, Prof Z M
VAN DER WEIJDEN, Wouter
VAN ZON, Henk
VERZELLENBERG, Guus &
Marlies
VIALLS, Mr A O M
VIRTUOSO AFRICA
Destinations
VLASWINKEL, Diane & Peter
WATSON, Prof R M
WEBB, Prof & Mrs J H
WEBB, Mr T V
WEBBER, Mrs A L
WEBBER, Mr J N
WEDEPOHL, Dr & Mrs P T
WESSELING, Henk & Tia
WESTMINSTER ABBEY
WESTERFORD HIGH
SCHOOL
WILLIAMS, Mr C H & Mrs A F
WINTER, Mrs P
WIXTED, Bo & Mimi (Women's
Soft Ball League, Saudi
Arabia)
WOLHUTER, Mrs M
WOODBRIIDGE CHARITY
Trust, The Fred & Jean
WRAY, Ms Kim
YALEZO, Miss G J
YATES, Miss E
YOUNGE CC, Amanda

In Memoriam

Mrs A J Abrahams, Mr R G Attwell, Mr A J Flederman, Dr A Irving, Dr B Jaffe, Miss J Kenyon, Mr G C Pietersen, Mr P C Theron, Mr A O M Vials, Lady Olivia Waldron

These were supporters of our work, faithful in the giving of money and encouragement. Nearly all were with us at our beginnings in the early 1970s. Our sympathies go to their families and friends.

STAFF MEMBERS:

Eliza James: Director.

Lyn Daniel: Sponsor Secretary - manages sponsor database and looks after our generous donors.

Zena Stanfliet: Accounts Manager - manages accounts and bursar payments.

Nobathembu Rululu: FET Manager - manages FET work in the Eastern, Northern Cape and southern parts of North West Province.

Mpumi Williams: Student Advisory Officer – manages the schools' portfolios and assists the FET Manager

Nontuthuzelo Ngcetane: School Secretary - manages learner database and looks after school awards.

Very special thanks go to volunteers who continue to give invaluable service: Ruth Allsopp, Fran Barb, Hilda Barry, Margaret Bull, Wendy Kerby, Erika Targett and especially Sandy Elsworth in the U.K.