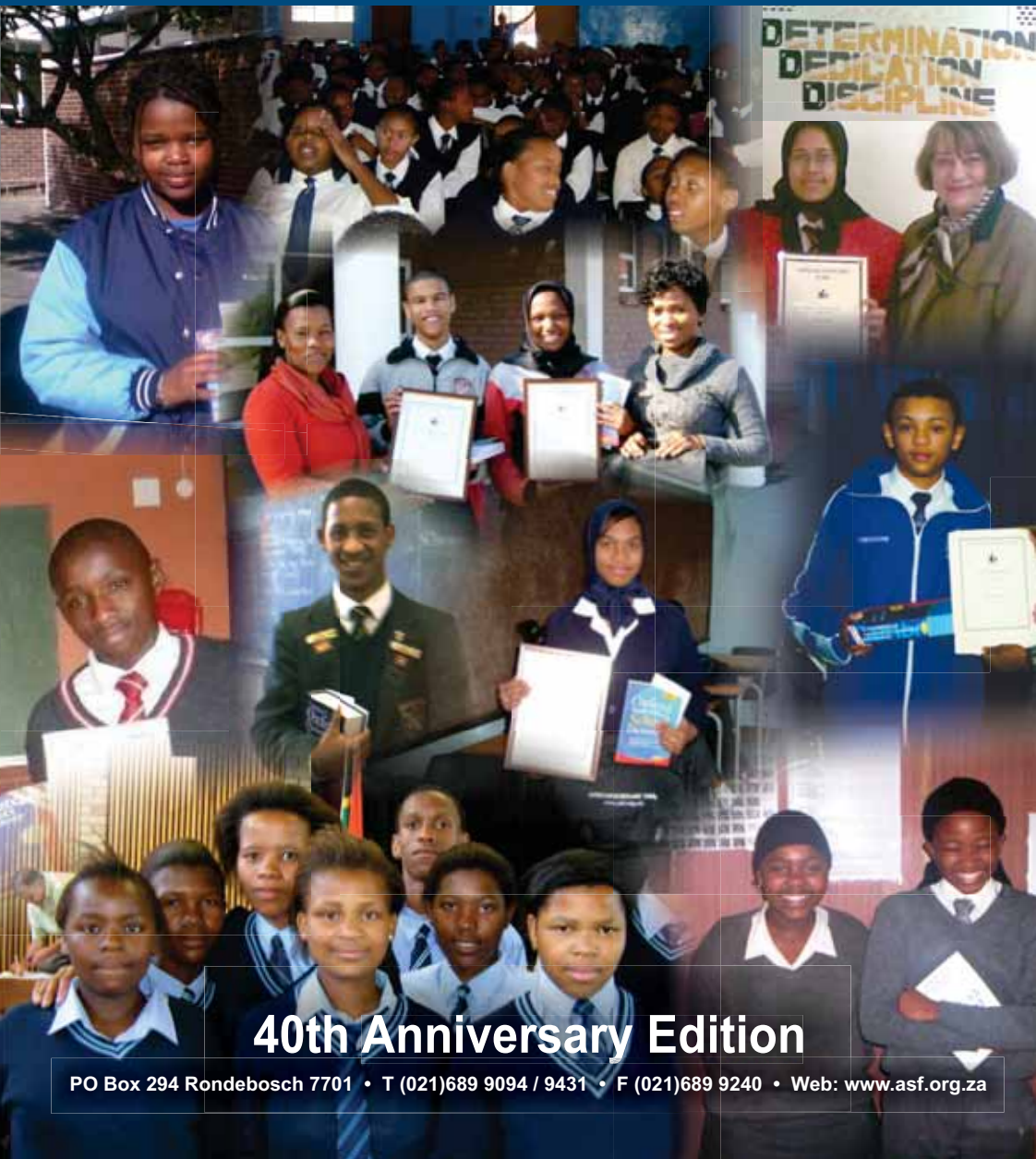


AFRICAN SCHOLARS' FUND ANNUAL REPORT 2010

An Educational Trust registered with the Master of the High Court: NPO 002-838

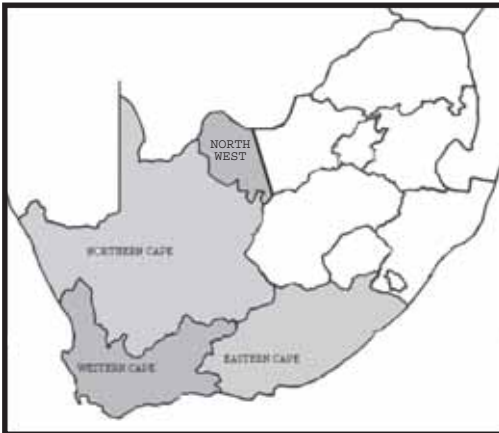


40th Anniversary Edition

PO Box 294 Rondebosch 7701 • T (021)689 9094 / 9431 • F (021)689 9240 • Web: www.asf.org.za

MISSION STATEMENT

The African Scholars' Fund, through awards and guidance, assists promising young schoolchildren from desperately poor homes to complete their secondary or FET college education.



Our area of operation includes the Western, Northern, Eastern Cape and parts of the North West.

BANKING DETAILS IN SOUTH AFRICA

Bank:	Standard Bank of SA Ltd
Account type:	Current account
Account number:	07 140 410 4
Branch code:	02 50 09
Swift code:	SBZA ZAJJ (Rondebosch)

CHAIRPERSON'S REPORT

In the celebratory Forty Year On context of this special edition of the African Scholars' Fund annual report, it is right to start with words of gratitude. These must go to many people down those years. Led for so long by our founding mother Margaret Elsworth, the ASF has been well served by a succession of trustees, staff, volunteer workers, donors and sponsors. In those forty years all of them have constantly had in their minds and hearts the welfare of the more than 40 000 young people who have been given ASF bursaries. In a similar caring spirit, teachers in schools in many parts of South Africa have also played their part.

In 2010 we express special gratitude to four of our trustees who have left the Board: Cathy Birch, Biddy Greene, Margaret Bull and Margaret Elsworth. We miss them all. In the 2009 annual report we paid tribute to Margaret Elsworth, and in this report we record special appreciation of the long record of splendid service to ASF of Margaret Bull - as trustee, volunteer worker and from 2003 to 2009 as Chairperson of the Fund. Thank you, Margaret, for your dedicated faithfulness.

In 2010 the great work of ASF has continued and the detailed statistics in this report show both relative and absolute increases on past years. The work continues to be far more than the collection and distribution of money, and no statistics can do justice to the importance of the personal mentoring aspects of the Fund's work. 'Caring matters', as one person put it.

But 2010 was also a year of changes. Not only were there the changes in the Board and its leadership as reported, but also in premises. After a little less than a year in Waverley Park, it was decided to move back to Rondebosch, to Tannery Park in Belmont Road, close to the old ASF stamping ground. This has already proved to be a good move.

This period of transition lent itself to the idea of an organisational review at the end of 2010. All those involved in the working of ASF were invited to express their views in a comprehensive and structured survey. The responses and comments were collected and presented to a plenary session of all who had taken part. A number of recommendations are now being shaped in practical terms for being decided on and implemented during 2011 and beyond. Every aspect of the work was included. Much was found to be going well and will be continued; some shortcomings and gaps became apparent and will be dealt with. Areas covered included the process of selection of bursars and their mentoring; contacts with schools and educational authorities and developments; increasing the donor base considerably; communication and publicity; financial and other management – all guided by the underlying mission and vision of ASF.

Responses from all those who read this report would be welcomed. It is planned to solicit your help soon, particularly in helping to increase the number of donors.

It is appropriate to end by reiterating the note of celebration and thanksgiving that is the keynote of this publication.

John Gardener
Chairman

BOARD OF TRUSTEES (into 2011): Mr. John Gardener (Chair), Ms. Ruth Allsopp, Mr. Thurston Brown, Prof Hugh Corder, Prof Geoff Everingham, Mr. Mlungisi Fani, Mr. Stephen Flesch, Ms. Eliza James (Dir), Mr. Ramesh Maharaj, Ms. Wendy Moul, Mrs. Eunice Musapitso, Mr. Mark Solomon, Mrs. Erika Targett, Prof John Webb.

DIRECTOR'S REPORT

2010 has been quite a year – not only for our bursars, but also for the organisation itself. Staff members were all plagued with rather worrisome bouts of illness to varying degrees, three staff members lost loved ones and two staff members' spouses were adversely affected by the economic downturn in the country. The organisation moved offices on two occasions - in the space of ten months. The first move was necessitated due to the office block we occupied having been sold. The second brought us in closer proximity to the bank and post office; this was operationally more sound.

2010 is also a very special year, as it sees the organisation celebrate its 40th year. The ASF has gone from working out of the Founder's home to occupying office space in Rondebosch; permanent staff had to be appointed and computer systems had to be installed. Way back in the 1970's the number of bursaries awarded was about eighteen – today we award in excess of 2500 bursaries per annum. Then we did not have to worry about paying for electricity, bank charges or even auditing fees. Volunteers could happily trek across the country to embark on school visits to the Eastern and Northern Cape – today, it is not safe to consider a long road trip. Much has changed, but the essence of the organisation remains. Our donors and staff have remained loyal.

Much has not changed for our beneficiaries. This year, again, our bursars experienced a good deal of disruption. Alongside the many social challenges they faced, there was the Soccer World Cup and the teachers' strike, which ultimately translated into a mere 180 school days for the grades 8 – 11 and 149 school days for the 2010 matriculants. The teachers' strike was a major blow to public education and had a devastating effect, particularly on the education of those in the rural areas. Not knowing how long the teachers' strike would last, matriculants were forced to take responsibility for their own revision. Many embarked on this process on their own and those that were able to do so got together and formed study groups. We need to acknowledge the sterling effort made by the larger percentage of schools for presenting extra classes to the matriculants during their September break. Parents and students alike have expressed their gratitude for the commitment shown by the teachers.

It is evident that parents continue to be concerned – “Educational system a scandal”; “Unemployed school leavers may turn to crime”; “Parents disillusioned with most government schools”. These are the headlines that we see in our daily newspapers. What do these statements say about our education system – are these statements justified?

Speaking at the graduation ceremony for the Eastern Cape Student Sponsorship Programme at Selborne College in East London, Rhodes University Vice-Chancellor Dr Saleem Badat called the state of education in the country a “tragedy”. Dr Badat said that thousands of South African children would never reach their full potential because of the appalling state of education. Only a quarter of pupils that began grade 1 complete grade 12 and have the opportunity to make it to university – this despite the country spending R130 billion a year on education. Dr Badat went on to say that the South African schooling system does not realise the talents of our youth as do the systems in Kenya, Zimbabwe and Tanzania. “These countries are much poorer than South Africa. That’s why I say this is a scandal”. (Daily Dispatch January 2011) .

A number of child rights groups have also warned that school leavers who fail to qualify to further their studies at institutions of higher learning and who cannot find work, are at risk of turning to crime and substance abuse - jobs are hard to find and school-leavers can become demotivated and ultimately dysfunctional. Across the country thousands of learners are celebrating passing their matric, but for many it is unclear what their next step will be. Non-governmental organisation Molo Songololo’s Director, Patrick Solomons, said it will be an especially critical year for those from disadvantaged backgrounds who cannot afford tertiary education. (NGO Pulse – January 2011).

Access to school is an essential requirement in achieving one’s right to an education. Many barriers continue to exist hindering access to education including extensive distances to the nearest school, poor roads and lack of transport, among others.

The number of unemployed school-leavers grows annually. Parents realise the harshness of this reality and many are prepared to sacrifice much to ensure a better education for their children. A study by the SA Institute of Race Relations revealed that the number of children attending private or independent schools increased by 50% between 2000 and 2009, with an increase of only 1.6% in pupils attending state schools over the same period. Parents want what is best for their children and the growth in independent school enrolment is a clear indication that parents are losing faith in the public school sector.

The institute also revealed that between 2000 and 2009:

- The North West Province reported the biggest decline in state school enrolment (15%)
- The Northern Cape had a 35% increase in state school attendance – the biggest in the country
- The Eastern Cape reported the highest increase of independent school enrolment at 422%
- The Western Cape only reported a 6% increase in the number of pupils attending state schools. (NGO Pulse – January 2011)

According to Statistics South Africa (2009), 21% of children between the ages of 7 and 13 years and 33% of high school children had to travel for more than thirty minutes to their nearest school. These figures are particularly high in rural areas and are on the increase with many schools becoming overcrowded and children being forced to travel even further.

2011 Applications:

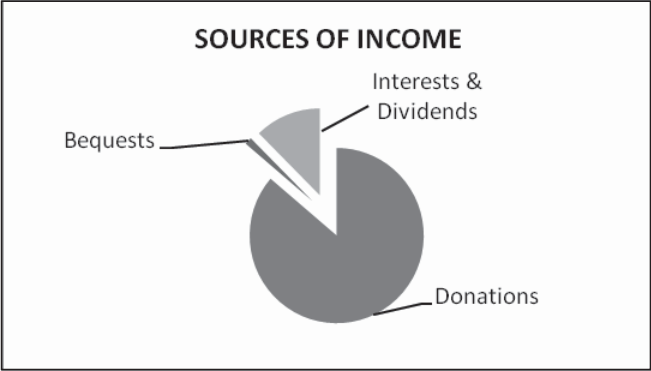
August through to the end of September saw an influx of application forms and as is the case every year, our offices were flooded with thousands of new applications. Again this year we extended the closing date to the end of October. 2151 Provisionally accepted applications were set aside for consideration pending their December 2010 results. 1326 Of these learners met our criteria and in addition to the 1211 bursars carried over from the previous year, the ASF has a total number of 2537 bursars registered (at school level) for 2011. Our intake of FET college level students increases every year and to date we have 136 registered for the first semester 2011 – almost double the number of students who had registered at the beginning of 2010.

To our loyal donors, we say thank you for your continued support, your encouragement and commitment in seeing this work continue.

*Let your intent be Love, Oneness, Peace, Respect
and Support for Humanity and all Life.*

Eliza James

FINANCIAL REPORT – for the year ended December 2010



Salient features of the finances of the African Scholars Fund are that we recorded a deficit for the year of R4 16 039. This was after assisting 2571 learners with a total of R2 395 202 – an average of R931.62 each for the year. To many of these learners this modest sum makes their school attendance possible.

The total distributed was 6.44% up on the R2 250 326 distributed the previous year. This was in spite of donations received being R328 984 less (9.68%) than in 2009. The reduction in the economies of many countries worldwide obviously put the pinch on disposable funds among our regular supporters. We need to broaden the base of our donors and appeal to you all to try to find two people in your circle of friends and family to become supporters of the Fund. R80 per month is all it takes to help a child to a better future.

Total assets at the end of the year were marginally over ten million rand and these are soundly invested in a carefully managed mixture of equities and cash. Administration expenses last year were burdened by the necessity of having to move our offices twice. We are now happily settled in very suitable premises in Tannery Park, Rondebosch, close to the bank and post office.

Our heartfelt thanks go to Eliza James and her team who run the ASF so efficiently, as well as to the dedicated volunteers who assist in sorting and evaluating scholars' applications.

Stephen Flesch
Treasurer

Abridged Financial Statement for the year ended 31 December 2010

INCOME STATEMENT

For the year ended 31st December 2010

	2010 R	2009 R
INCOME {incl. interest earned from bequest}	3 508 686	4 100 623
Bequest {Re 2009:income received in the form of shares / investment portfolio. Not included in surplus calculation}	47 465	2 613 927
Donations	3 069 063	3 398 047
Investments	501 867	550 428
Portfolio fees	(120 379)	(72 840)
Disposal investments/Revaluation reserve	58 135	221 303
TECSAT (Administration Fee)-.....	3 685
 EXPENSES	 1 574 295	 1 156 265
Office Expenses	413 518	207 099
Salaries	1 160 777	949 166
 SURPLUS (cash) AVAILABLE FOR AWARDS	 1 981 856	 2 944 358
AWARDS (Incl. career guidance w/shops)	2 397 895	(2 250 326)
SURPLUS (cash) FOR THE YEAR	(416 039)	694 032

BALANCE SHEET

	2009 R	2008 R
ASSETS		
CAPITAL TRUST FUND	60 400	60 400
GENERAL FUND	8 038 420	8 454 459
REVALUATION RESERVE	1 929 849	1 165 908
	10 072	13 197
CURRENT LIABILITIES (leave accrual)	<u>10 038 741</u>	<u>9 693 964</u>

Copies of our audited financial statements are available at the office on request. The Trustees thank Messrs Browne & Associates, and in particular Richard Browne, for the prompt audit of our books.

Assets are shown at Market Value as at 31 December 2010.

SCHOOL RESULTS - 2010

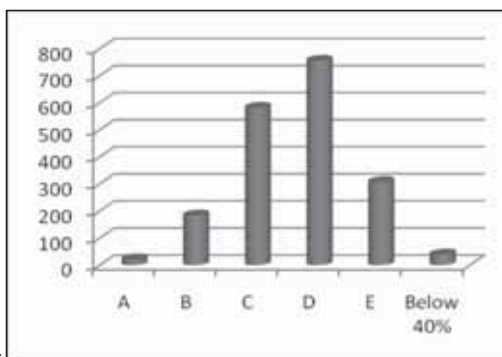
2571 Bursars received an award this year that was distributed as in the columns below – 395 of these learners were in their final year of schooling. Note also that refunds were received from schools for six learners that registered, but did not attend school during 2010:

Province	Number of Bursars	Percentage
Total Number of Bursars	2565	
Eastern Cape	1818	71%
Western Cape	529	21%
Northern Cape	218	8%

GRADES 8 TO 11 (Total number = 2170)

Summary

A (80 – 100)	22
B (70 – 79)	184
C (60 – 69)	582
D (50 – 59)	756
E (40 – 49)	308
Below 40%	40
Report outstanding	271
Did not write exams	6
Died	1

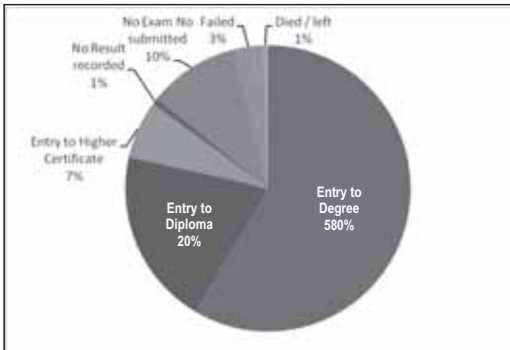


Follow up rate: 87%

Pass rate: 98%

During 2010 the Minister of Basic Education, Mrs Angie Motshekga, declared that there would be a plan for schools in South Africa called Action Plan to 2014. This Action Plan explains the twenty-seven national goals that lie at the heart of the plan. Thirteen of these goals are output goals dealing with better school results and enrolment of learners. The remaining fourteen goals deal with what needs to happen for the output goals to be realised. On 21 March 2011 (Human Rights Day) more than 20 000 primary and high school students in Cape Town marched on Parliament demanding access to quality education for all of South Africa's learners – schools with stocked libraries, running water, electrical connections, sports facilities, computer centres and sanitary toilets. In other words, all the infrastructure and facilities that they need in order to learn and thrive.

SENIOR CERTIFICATES (Total number = 395)



Summary – Matric results

Entry to Degree	231
Entry to Diploma	79
Higher Certificate	26
No result recorded	3
No exam number	41
Failed	13
Died / left	2

(354/395 = 90% follow up rate)
(336/352 = 96% pass rate)

The 2010 matric class which began school in 1999 comprised 1,318,932 learners. According to the Department of Basic Education media statement, 643,546 sat for matric exams in 2010. This means less than half sat for the matric exam. What happened to the rest of the learners – when did they drop out of school – what does the future hold for them?

The significance of career guidance for high school learners:

(extracts from an article written by Phumla Pearl Mhlanga – SANGONeT)

The debate on how matric results could be improved often excludes the issue of career guidance, without which many of these matriculants will not be able to make informed career choices. The lack of guidance is evident when year after year the majority of these matriculants flock to universities while FET colleges are far from achieving government's target of enrolling one million learners by 2015. Learners need to be made aware that FET colleges also offer programmes that drive the growth of our economy.

The education system should prepare learners for matric at least from grade 10 onwards. Learners should be assisted in selecting subjects that are in line with their future plans and then be further guided on where they can apply for financial assistance. It is especially in the rural areas where a lack of information or access to information plays a major role – how many of the rural areas in South Africa have libraries?

The questions raised are: Is the issue of career guidance not the duty of the Life Orientation teachers, should government consider deploying career counsellors to schools, should government not consider career centres that will cater for schools in a specific region?

It is a fact that the youth in poor and rural communities do not have exposure to the internet and national newspapers. There are hardly any functional libraries in these areas, so the vast majority of these young people are not well informed about higher education opportunities, the availability of bursaries or even the different career options that could be available to them. In terms of what public schooling has to offer in the area of career guidance, are we falling short and failing our youth?

ASF BURSARS EXPRESS THEIR GRATITUDE

“It has been 5 years in high school and I cannot believe that I am finished with high school. African Scholars' Fund has been with me for the past 5 years till now. ...you have opened opportunities for me and made me believe in myself. For that I am appreciative and filled with intense happiness to be part of ASF. I hope you will continue for many more years to come. Thank you to the people and sponsors who have helped...”

Noluvuyo from Port Elizabeth

“As we've been together as a family through my progression, I appreciate your help for all these years. I only have single parent, but you sponsors you took responsibility and play the role of my father who passed away 10yrs ago. My mother is so grateful and proud of me, because I am the one who is going to keep us from poverty and poorness. I am not coping waking up without food sleeping with water. I don't even believe how I passed going to school hungry every morning. Now I want to study something that wont took me long before getting work. I really want to leave poor behind, normal life is the life I need to live. I also ask for an advice from you my sponsors if what can I study to change my life before my mother die...”

Athabile from Qamdobowa location – Eastern Cape

“You are a great help to students from disadvantaged areas and homes. You've helped me through my high school journey and I'm very grateful for that . And you also inspire many young children to see the positive side of education. And also, through your help and inspiration, I'm accepted at Cape Peninsula University of Technology to study Civil Engineering....”

Siyabonga from Colesberg

"I hereby write this letter to express my sincere appreciation and gratitude for your treatment over the past two years. It has been a pleasure and a blessing to be one of your bursary holders as it has helped me in many ways. I was lacking with school things like uniform, school fees and everyone could easily see that I was from a poor family but because of this bursary I became like everyone else, no one could label me as the "poor girl" anymore. Not only did it help me with my physical needs but also academically. There were always ups and downs especially at home but with the letters of motivation I received from ASF, I made it. It is people like you who make people like me want more in life and eventually succeed. I will never forget your love, care, support and warmth".

Siphokazi from Dimbaza

"I am doing Bachelor of Applied Communication Management in the University of Fort Hare. It's my pleasure to thank African Scholars' Fund for what they've done for me. Words cannot express my appreciation. African Scholars' Fund helped me for three years. I am doing very well here. I passed my first year and I hope in two years come I will be in the field doing what I've dreamed when I was a child. Thank you again. Please do the same for other children".

Sinethemba from King Williams Town

"In life, one can't cope without the help of another person, no matter his/her background is, it is always the situation where one hand washes the other. To the sponsors, the management and the African Scholars' Fund staff at large I thank you all for the support (financially and socially) that you have been giving me. Through the letters that I received from you there past years they had motivated me and had been the fuel that I needed to the road that takes me to my ambition (passing grade 12). Please continue the fruitful work that you had been doing to other needy pupils as well. THANK YOU ALL AT ASF".

Siphiwo from Port Elizabeth

On a re-application form a grade 10 learner (from Mitchells Plain, Cape Town) answered 2 pertinent questions as follows:

RE-APPLICATION FORM

Q: If you are applying for other financial help, give details: *"Things are getting worse, it's not easy to find food".*

Q: Please describe any changes at your home this year: *"As I already said sometimes we go to bed without having anything so this money also help at home and school of course".*

FURTHER EDUCATION AND TRAINING COLLEGE REPORT

149 students were awarded bursaries costing **R570 675** in **187** courses. The pass rate achieved was **90%** - an encouraging 8% increase on the 2009 results. The failure rate was 9% (down from 16% in 2009), with 1% of our students not having written their final exam.

The Nated Courses (N1 – N6) are back!

This is a big relief for matriculants who do not want to, or do not qualify to attend a university or a university of technology. They no longer have to backtrack and spend a further three years in a FET course designed for learners with a grade 9 certificate.

This amendment was officially announced on the 17th May 2010 in the Government Gazette, from the Minister of Higher Education and Training, Blade Nzimande. Whether the N Courses are back permanently or is an extension of the phasing out of the National N Certificates: N1 – N6 remains to be seen.

Student Support Services Workshops

Workshops continue to have a positive influence and impact on students. It is evident that students appreciate the opportunity as it adds value to their studies and motivates them to do well. Besides empowering them to make better informed decisions, it eases apprehension and transition from college to the world of work. First National Bank and D G Murray Trust are the main sponsors of these workshops which are held twice a year. We sincerely thank them for investing in our youth at public FET Colleges.



Giving back to the Community

At our student support workshops, students are encouraged to participate or volunteer in their communities. When we started with the workshops in 2008, Thukela was one of the bursary holders. She secured employment as the Personal Assistant to the Executive Director of National Business Initiative in East London. She heeded our call and volunteered her services at an orphanage in Mdantsane. We were very touched when she invited us to visit the orphanage when we conducted a workshop in East London in October 2010. She is very passionate about her community, and hopes to uplift and encourage the youth. She has gathered a group of friends to form a group called Nikiliitha eMdantsane (meaning: Give hope to Mdantsane).

This is what she says, “You are where you are because someone helped you at some point along the way, so it is vital to give back to those who have not yet stepped up the ladder. It is a duty that should come from within. Thank you FNB and African Scholars' Fund for helping me when I needed it the most. The student support workshops conducted by the fund have opened my eyes and my heart. Thank you so much.”



Thukela as a student at Buffalo City FET College in 2008.



Success Stories

These are some of the students who completed their studies in 2010 and are now employed and in training.



Revona, completed Business Management and achieved an A in Economics. She moved to Port Elizabeth when she could not find a job in East London. She is now an Administration Assistant at Volkswagen in Uitenhage. She was invited as a guest speaker at our PE Student Support Workshop in February 2011. Her poise, confidence and success did much to inspire the attendants at the workshop.

Sinoxolo completed Financial Management with good marks. She is now employed as a Finance Clerk at Salga (South African Local Government Association).



Abigail is from Bethelsdorp in Port Elizabeth. She completed her Business Management course at Dower campus and is now employed as a Stock Controller at Game Stores.

Wonga comes from Queenstown. He studied Electrical Engineering at Buffalo City College in East London. Wonga completed his studies last year in August and is now employed as an Intern Technician at Chris Hani Municipality.



LETTERS OF THANKS FROM OUR STUDENTS

"I would firstly like to take this opportunity to thank you for everything that you did for me. No words in this lifetime can help you understand how grateful I am. It gives me great pleasure to tell you that I finished my studies, graduated and was awarded the best student in Human Resource Management. I was also accepted by Buffalo City Municipality as an Intern HR Assistant. You have offered me the greatest gift, that of pursuing a dream of acquiring a higher education and empowering me to make a meaningful contribution to the society as a whole. I am eternally grateful for your trust and confidence in my abilities."

Noluvo from Kingwilliamstown

"I am very happy for the simple fact that my studies are completed with the help from African Scholars' Fund. I am sure that I am not the only student who can say that, thank you so much for the help. I am currently working as a Cad Assistant at RMA Architects and has become a very good asset to this company within a short period that I have been working here. Yes, my course, Interior Décor and Design is related to the work I do. I am a proud student."

Althea from Port Elizabeth

"I am responding to your letter. I am currently doing my in service training at the Department of Correctional Services, Regional Office in East London. I am working as a Financial Clerk and my job is very related to my course. I appreciate everything you have done for me and keep on doing good things to everyone."

Kaka, N from East London

"Thank you guys again for helping me. I am working as an Accounting Clerk at the Department of Education, Engcobo district. I am here now because of you, keep doing your good work and God bless you."

Ziyanda from Engcobo

"Thank you for awarding me the opportunity to reach my full potential because of the ASF I now can provide my family with much more than what we had before. You are a real inspiration to the youth and I cannot thank you enough. The workshop last year taught me a lot and every bit of knowledge I gained I carry with me every day."

Revona from East London

AFRICAN SCHOLARS FUND (UK)

UK Address: 10 Lurkins Rise, Goudhurst, Cranbrook, Kent, TN17 1ED
SA Address: P O Box 294, Rondebosch, Cape Town, 7701, South Africa
Tel: 01580 211550 email: sandyelsworth@yahoo.com
Charity Number 1070406

CHAIRMAN'S REPORT FOR 2010

It gives me great pleasure to report again on the activity of the UK branch of the ASF. Contributions during the year totalled £5,949.20 with all the monies directed to the office in Cape Town for disbursement.

I would like to make a special mention of the staff of Moss Hey School and the parents who have raised a useful sum during the Carol Service and fundraising events. Many thanks to Mrs Hutchinson, the Head, who has supported the Fund's work over a number of years.

Many thanks, once again, for those who have given both financial and verbal support to the work of the Fund, and we look forward to your continued support.

Sandy Elsworth
Chairman, Board of Trustees
African Scholars Fund (UK)

STATEMENT OF ACCOUNTS TO 31 DECEMBER 2010

INCOME:	Donations Received	£5,943.91
	Interest	£5.29
<hr/>		
	Sub total Income	£5,949.20
EXPENSES:	Bank charges	£0
	Administration	£0
	Sub total Expenses	£0
<hr/>		
AVAILABLE FOR DISBURSEMENT:		£5,949.20

The Charity has no assets or liabilities. We are a registered charity in the United Kingdom.

DONOR HIGHLIGHTS

- **Mathematics Circle:** Professor J H Webb and his UCT colleagues have been running weekly enrichment programmes in maths for promising youngsters - the “UCT Mathematics Circle”. These sessions are offered free of charge. At the end of the year, letters were sent to parents suggesting that, in turn, they should “Pay it Forward” with a donation to ASF. The response had been very encouraging and many of our learners will benefit greatly.
- **Book Royalties:** Royalties were received from Professors Rodney Ehrlich and Gina Joubert, authors of “Epidemiology – a Research Manual for South Africa”.

Royalties were also received from James Gardener, author of “Recollections”.

- **Golden Wedding Anniversary:** Richard and Elspeth Ivey celebrated their 50th wedding anniversary on 16 January 2010 and requested family and friends, in lieu of gifts, to send donations to the ASF. Congratulations to this wonderful couple.
- **Vegetables:** Jonathon Rees grows vegetables on his smallholding, Yerbury Farm in the United Kingdom. He sells his produce to the local deli. The owner takes his cut, but profits are forwarded on to the ASF.
- **Gary Bean – UK:** Sending a donation in lieu of Christmas cards to family and friends in South Africa.
- **In memory/lieu of:** Many of our loyal donors continue to give in memory of loved ones, in lieu of birthdays and on special occasions – thank you all.

THANK YOU also to all our loyal donors abroad who continue to generate new interest, support and funding from friends and family.

**The Trustees wish to thank all our regular sponsors and donors
for their continued support for the period 1.1.2010 to 31.12.2010.**

ABE BAILEY TRUST
 ACKERMAN FAMILY
 Educational Trust, The
 ALBERT, Mrs J F
 ALLISON, Mr & Mrs D
 ALLSOPP, Mr A C
 ALLSOPP, Ms K
 ALLSOPP, Ms R J
 ANDREW, Mr & Mrs K
 ANDREW, Mr R E
 ANON
 ANON (Edinburgh)
 ANON (Milnerton)
 ANON (Mowbray)
 ANON (Tokai)
 ANON (UK)
 AUTHORS, EPIDEMIOLOGY:
 "A Research Manual for S.A."
 BADENOCH, Ms A
 BAGLIONE, Mr G
 BAGULEY, Mrs B J
 BAIGRIE, Drs R J & C
 BAKER, Mr Liam
 BANNATYNE, Miss E R
 BARNETT, Mrs E A
 BARNETT, Revd & Mrs D J
 BARRY, Mrs H
 BATES, Ms A E
 BATTINO, Prof R
 BEAN, Mr G
 BENTON, Mrs M
 BERDUN CHARITABLE
 Trust,
 BERGER, Dr & Mrs M
 BERMAN, Sir Franklin
 BERMAN, Joel
 BERMAN, Marc
 BERMAN, Mr & Mrs R
 BERMAN, Sam
 BETTENS, Ms Suzanne
 BEVIS, Mrs A
 BIRCH, Mr & Mrs D
 BLAGDEN, Mr H
 BOB'S PANTRY
 (Mr R F Jordan)
 BOL, Dr P
 BOONZAAIER, Ms S
 BOPI, Ms N
 BOQWANA, Mr F S L
 BOURNE, Prof S A
 BOYD, Drs John & Juliet
 BRADLEY, Mr & Mrs C R
 BRADLOW, Mr A
 BRADLOW CHARITABLE
 Trust, The Frank & Edna
 BRATHWAITE, Ms C
 BURGER, Miss E
 BURTON, Mr & Mrs G J C
 BYWORTH, Ms M
 CALDER, Mrs J
 CARGAN, Mr L
 CARTER FAMILY
 Charitable Trust
 CHALMERS, Mrs J
 CHAMBERLIN CHARITABLE
 Trust, The Elsie & Allan
 CHAMPION CHARITABLE
 Trust, The Hillary & Dorothy
 CHIAPPINI CHARITABLE
 Trust, The L & S
 CLAGUE, Mr & Mrs E M
 CLEMENTS, Ms K
 CONSTANT, Mrs M
 CORDER, Prof H & Ms C
 COUSINS, Mr & Mrs D A
 CRAGG, Dr & Mrs G M
 CRIDA, Mrs A H
 CHRIST CHURCH
 Fellowship, Bristol
 CROSOER, Mr P R
 CROUDACE CHARITABLE
 Trust, The Lynette
 CUSTOMER EQUITY
 Company
 DANGWEN TRUST, The
 DANIEL, Mrs L J
 DAVEY, Mr B R
 DAVID, Mrs L
 DAVIDGE, Mr & Mrs J
 DAVID GRAAFF
 Foundation, The
 DAYIMANI, Miss A
 DEGENAAR, Dr & Mrs J J
 DE LISLE, Mrs M E
 DE LISLE, Rev M H
 DENNISON, Mrs M
 DENNY, Mr A R
 DERHAM, Mrs P L
 D G MURRAY TRUST, The
 DICEY, Mr & Mrs D
 DOSÉ, Ms R M
 DOUGLAS, Mr & Mrs I
 DROSTE TRUST, The K C
 DUNCAN, Mr J E
 DUNLEAVY, Ms C
 DUNN, Prof R N
 DU PLESSIS, Mrs E
 DUSTERWALD, Mr & Mrs R
 EAGLE, Mr & Mrs G J
 ECKFORD, Mrs S
 EINHORN, Mrs E
 ELSWORTH, Dr M
 ERRINGTON, Miss C
 ETIENNE ROUSSEAU
 Gedenkfonds
 EVERETT, Prof & Mrs W J
 EVERINGHAM TRUST,
 The Geoff
 FACSURE FINANCIAL
 Management Services
 FESTER, Ms F
 FIELD, Mr G D, Estate Late
 FIRSTRAND FOUNDATION,
 The FNB Fund
 FISHER, Dr R M
 FLEDERMAN, Mr A J, Estate
 Late
 FLESCH, Mr & Mrs S
 FOLB, Prof & Mrs P
 FOSKETT, Ms K
 FOX, Ms B
 FOX, Mrs H
 FRANCIS, Mr M J D
 FUCHS FOUNDATION, The
 Carl & Emily
 GARDENER, Mr & Mrs J B
 GEYSER, Mr A
 GILBERT, Mr H J
 GILES, Mr D R
 GODDARD, Mrs R
 GOGO, Ms N J
 GOLDBERG, Mr M
 GREENE, Prof & Mrs J R
 GRIBBLE, Ms J
 GRIMBEEK, Mrs C L
 GRIPPER, Mr & Mrs B B
 GROGAN, Mr & Mrs R
 GROGAN, Mr & Mrs T
 HALL, Dr S
 HAMILTON, Mr P

HANSEN, Ms S
 HARKER, Mrs J L
 HART, Ms E
 HARROWER, Mr A A
 HELM, Mrs J
 HENSHALL, Ms J
 HERMANS, Mr M
 HEYNS, Mr & Mrs M
 HIRSCHSOHN, Prof & Mrs P
 HODGE, Mr & Mrs V P
 HOFF, Mr & Mrs B
 HOFF, Dr & Mrs W
 HOLTGATE, Mrs J M
 HOLLEMAN, Mrs A
 HORNE, J E & M B A
 HOSFORD, Ms J
 HOWIE, Justice & Mrs C T
 IDESIS, Mr & Mrs H & family
 INNER WHEEL, CLUB
 of Newlands
 INVESTEC BANK LIMITED
 IVEY, Dr & Mrs R
 IYABUYA CONSULTING
 JARDINE, Dr & Mrs W
 JEFFERY, Mrs P
 JENSEN, Mrs G
 JOHNSON, Mr & Mrs N B
 JONES, Mrs R
 JONGEJAN, Ms Vera
 KANTOR, Mr & Mrs P
 KAPPELHOF, Mr Ton
 KARJIKER, Parveen
 KEEN, Dr & Mrs G A
 KEETON, Prof & Mrs G R
 KEIZER, Bert & Marianne
 KENT, Miss P
 KILANI, Advocate J L
 KINAHAN, Councillor O
 KINETIC ELECTRONIC
 Designs
 KING, Justice E L
 KNIGHTS, Mr & Mrs H
 KOJIMA, Dr M
 KOKERNOT, Diana
 KOTTLER, Prof & Mrs R E
 KOTZE, Mr & Mrs B
 KURGAN CHARITABLE
 Trust, The Israel & Rose
 LAKERVELD, Ad & Wenda
 LEARY, Prof P M
 LEEUWENBERG, Mr M
 LEEWIS, Rob & Marjan
 LEMANSKI, Drs C & S
 LEVY, Ms Gloria
 LORIMER, Mrs P
 LOWE, Mis E G

LIU, Mr F
 MADDEN, Dr & Mrs M V
 MALHERBE, Mrs V C
 MARCK, Klaas & Dieuwke
 MAYNARDS OFFICE
 Technology (Pty) Ltd
 McCORMICK CHARITABLE
 Trust, The R P
 McCRINDLE, Mrs P
 McNAMARA, Dr & Mrs J D
 MELVILLE, Mr & Mrs D R
 MIDDELMANN, Mr M J
 MILLAR, Mr J R
 MILLER, Ms M S H
 MOLL, Dr P
 MOODIE FOUNDATION, The
 Douglas & Valerie
 MOORE, Miss F I W
 MOSS HEY SCHOOL
 MOUNTFORD, Ms
 NATIONAL COUNCIL OF
 Women of South Africa
 NAYLOR, Ms M
 NDHONDHO, Prince L D
 NELSON MANDELA BAY
 Municipality
 NISSLEY, Mrs E B
 NOAKES FAMILY
 Charitable Trust, The
 NOAKES, Prof T D
 NORTON, Ms T
 NTSINDE, Mss N
 NTWENKA, Mr B S J
 NUSSBAUM FOUNDATION,
 The Rolf-Stephan
 OGILVIE THOMPSON, Ms V
 O'HAGAN WARD, Mrs V F
 ORPEN, Mr & Mrs C M W
 PARR, Dr G W
 PENBERTHY, Mr A J
 PERRY, Mr and Mrs R K
 PHILIP, Mr D H, Estate Late
 PIETERSEN, Mrs E M
 PRICE, Mrs A K
 RABINOWITZ, Mr & Mrs B P
 RAVENSCROFT, Mr M J
 REES, Mr J H
 REITZ, Mrs A E
 REYNOLDS, Ms P
 ROBERTS, Mr S S
 ROBERTSON, Ms S
 ROBINSON, Mr & Mrs A M L
 ROEHM, Miss C J
 ROGERS, Adv & Mrs O
 ROGERSON, Mr & Mrs G
 & family

ROLLO, Ms B
 ROLLO, Mr M W
 ROSEBANK SPIRITUAL
 Development Group
 ROSSINGTON, Mrs S
 ROTARY CLUB OF
 Kirstenbosch, The
 RUSTENBURG HIGH
 School for Girls
 SALMON, Mrs J
 SANDERS, Dr H-R
 SAUNDER, Mrs E M
 S A POWER SERVICES
 SCHAUERTE, Dr A
 SINCLAIR, Ms M
 SEBITOSI, Dr S
 SHACKLETON, Prof & Mrs M
 SHAPIRO-LIU, Mrs R S
 SINCLAIR, Mrs N
 SING AUSTRALIA
 Ashbury
 SMALBERGER, Justice J W
 SMART, Dr R
 SMITH, Prof A B
 SMITH, Mr & Mrs D C R
 SMITH, Mrs G
 SMUTS, Mrs J E
 SOAN, Mrs K L & family
 SOLOMBELA, Mr L
 SPENCER, Mr A
 STARKE, Mrs L
 STEIN, Mr W
 STEPHEN, Prof & Mrs A M
 ST GEORGE'S CATHEDRAL
 ST MICHAEL'S CHURCH,
 Sunningdale, Ascot
 ST OLA'S TRUST
 ST STEPHEN'S CHURCH,
 Pinelands
 ST THOMAS'S CHURCH,
 Rondebosch
 STUURMAN, Frits & Margriet
 SWINNY, Mr R L
 SWITCH-IT
 TALIWE, Mr L
 TARGETT, Mrs E
 TAYLOR, Ms B
 TEUNISSEN, Ton & Irene
 TUESDAY BRIDGE FRIENDS
 TOMS, Ms S
 TONI SAPHRA GROUP,
 Union of Jewish Women
 TRANS AFRICA SAFARIS
 TRANSNET LIMITED
 UNION CHURCH OF
 PROCTOR, U S A

TUESDAY BRIDGE FRIENDS
VAN DEN HEEVER, Justice L
VAN DE VIJVER, Ms L
VAN DER HORN, Mr F J
VAN DER SPUY, Ms Z
VAN DER WEIJDEN, Mr W
VAN EVERDINGEN, Jannes &
Irene
VAN IERLANT, Peter & Mirella
VAN NIEKERK, Mr J

VAN ZON, Henk
VERZELLENBERG, Guus &
Marlies
VINEYARD, Mr A
VLASWINKEL, Peter & Diane
WALDRON, Dr & Mrs W R
WATSON, Prof R M
WEBB, Prof & Mrs J H
WEBBER, Mrs A L
WEBBER, Mr J

WEDEPOHL, Dr & Mrs P T
WESSELING, Henk & Tia
WILKINS, J A
WILSON, Ms E
WINEARLS, Dr C & Mrs B
WINTER, Mrs P
WIXTED, Mimi & Bo
WOLHUTER, Mrs M
YALEZO, Miss G J
YATES, Ms E

In Memoriam

Mr D J A Farquharson, Miss J Hoole, Mrs E A Rollo,
Mr A O M Vialls, Dr W R Waldron

These were supporters of our work, faithful in the giving of money and encouragement. Nearly all were with us at our beginnings in the early 1970s. Our sympathies go to their families and friends.



Very special thanks go to volunteers who continue to give invaluable service: Ruth Allsopp, Wendy Kerby, Erika Targett and especially Sandy Elsworth in the U.K.

STAFF MEMBERS:

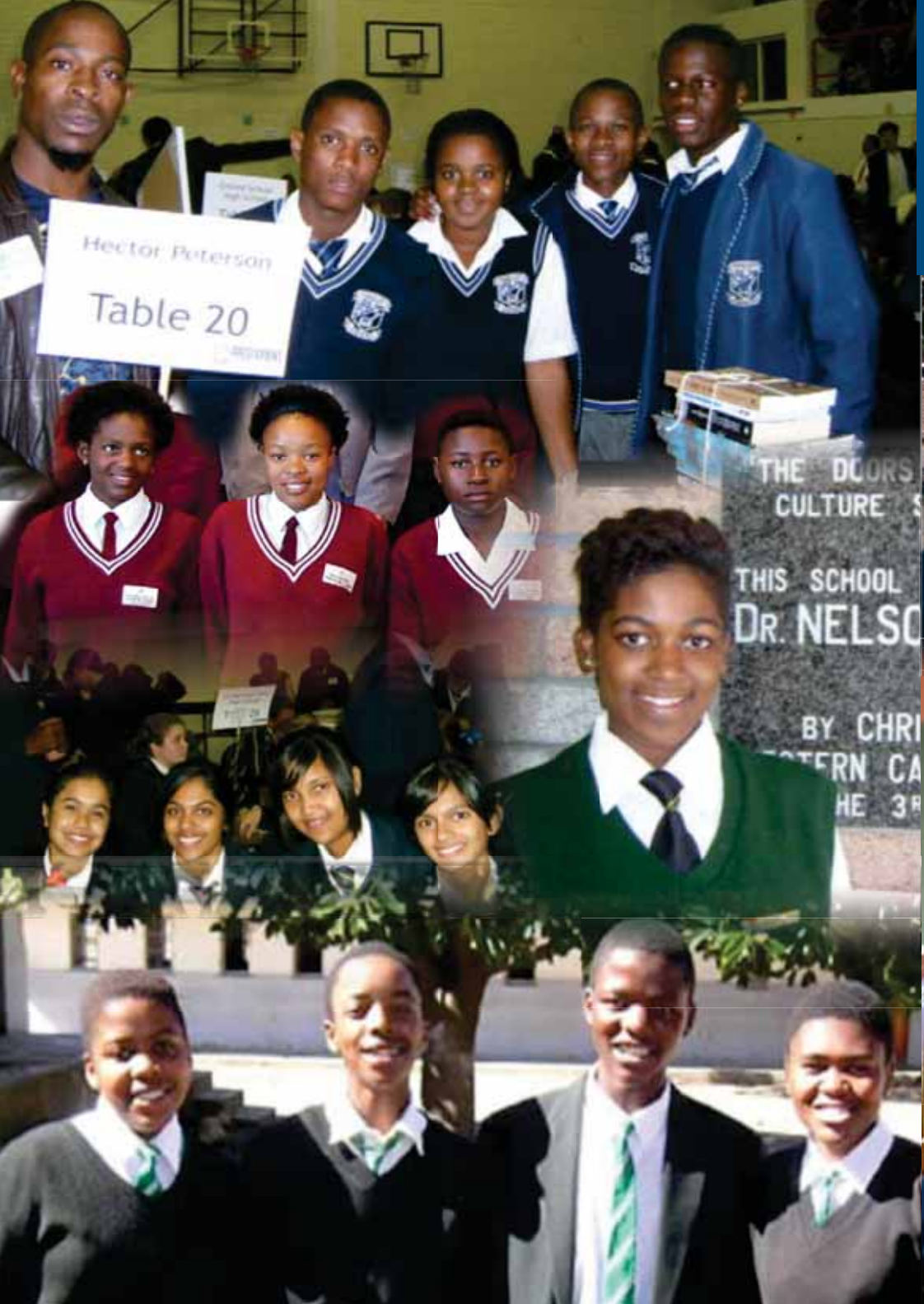
Eliza James:	Director.
Lyn Daniel:	Sponsor Secretary - manages sponsor database and looks after our generous donors.
Zena Stanfliet:	Accounts Manager - manages accounts and bursar payments.
Nobathembu Rululu:	FET Manager - manages FET work in the Eastern, Northern Cape and southern parts of North West Province.
Mpumi Williams:	Student Advisory Officer – manages the schools' portfolios and assists the FET Manager.
Nontuthuzelo Ngcetane:	School Secretary - manages learner database and looks after school awards.

BANKING DETAILS IN THE UNITED KINGDOM

Natwest (Sort Code 55-70-13)

Name of A/C: African Scholars' Fund

A/C/ Number: 16388364



Hector Poterson

Table 20

THE DOORS OF CULTURE

THIS SCHOOL DR. NELSON

BY CHRIS...
WESTERN CA...
HE 3F